

Question regarding plumbing plans:

Sump Pit:

On Sheet no. PA0201.2, there is a sump pit with a pipe in it labeled, "Pump piping up and out of pit. Flow has 2 options. Valve with pipe to outside for release outside or valve with hose connection for local tote." This is a modification in the 12-2019 plans from previous plans.

In the reply from Thrasher Engineering to Mr. Eckenrode's questions about this particular feature (question and response 8), Mr. Ferrell said, "For ease of construction, water from this sump will be tied into process water system. For clarification, there are no sumps connected into the sewer system. Further clarification can be provided that as per the note indicated on PA021.2 [sic] that these sumps are monitored and controlled by plant operator. If the plant operator determines there will be no negative impact, the sump discharge will enter the storm system. This will only occur after the plant's operator evaluates the discharge."

We cannot see where this sump pit ties into the process water line. Where does it tie into the process water line? By what methods does the "operator" determine there will be "no negative impact"? If it is determined the contents will have a negative impact and they need to be diverted to the local tote, where will the contents of the local tote be discharged?

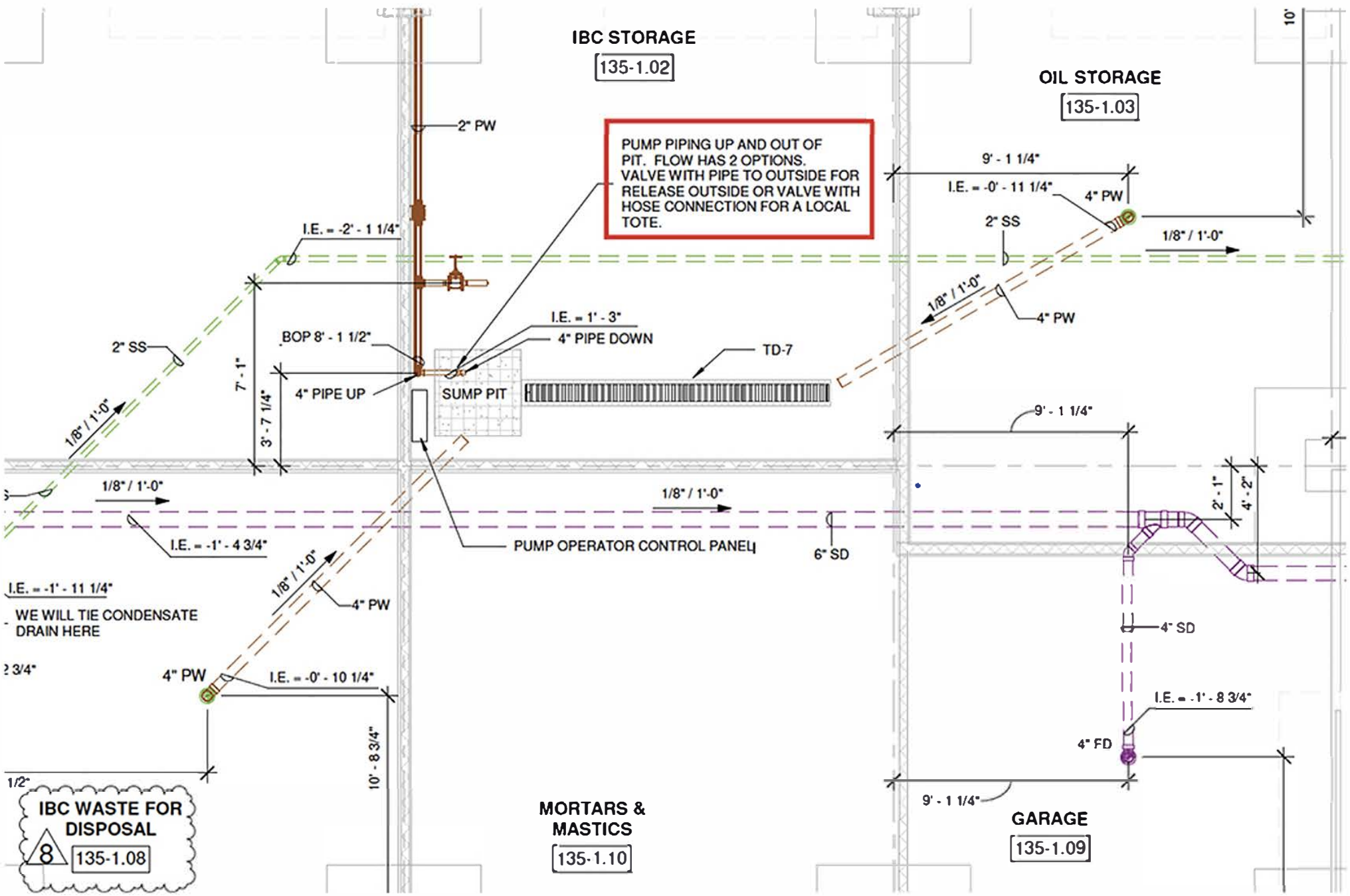
IBC STORAGE

135-1.02

OIL STORAGE

135-1.03

PUMP PIPING UP AND OUT OF PIT. FLOW HAS 2 OPTIONS. VALVE WITH PIPE TO OUTSIDE FOR RELEASE OUTSIDE OR VALVE WITH HOSE CONNECTION FOR A LOCAL TOTE.



I.E. = -1' - 11 1/4"
WE WILL TIE CONDENSATE DRAIN HERE

2 3/4"
4" PW I.E. = -0' - 10 1/4"

IBC WASTE FOR DISPOSAL
8 135-1.08

MORTARS & MASTICS
135-1.10

GARAGE
135-1.09

Sampling well:

On July 29, 2019, at the Charles Town City Council Workshop on the sewer the Mayor asked the following question and got the following response from Kristen Stolipher (CTUB employee).

Councilman Trainor: "I just had a really quick um technical question for for you Kristen. Monitoring Flows at the at the Rockwool plant, is it your intension, is it CTUB's intension to monitor the flow from the industrial side and the domestic user side? "

Kristen Stolipher: "Yes, so in our sewer user agreement with Rockwool, there will be sampling station monitoring stations on both of those lines, um we will take that data we will be running reporting to DEP every month, um we get those samples every week so we will have our operator will be going to the facility grabbing the samples reporting the results, um so yes we will be monitoring both of the lines."

Councilman Trainor: "And so for flow and content. Correct?"

Kristen Stolipher: "Yes."

Is this your understanding of the sewer user agreement (attached here) that you will be sampling as described by Kristen Stolipher? Will both the Sanitary and Industrial sewer be sampled for flow and content prior to merging with one another and prior to merging with any other effluent?

In the reply from Thrasher Engineering to Mr. Eckenrode's questions, Mr. Ferrell wrote:

"The pump station and flow meter will be maintained by Rockwool and not be the responsibility of CTUB."

Will this be the same for the sampling well? On Sheet No. 000-035, there is no sampling well denoted. Where is the sampling well? Why does it not appear on the plans? How will the samples be taken? Who will be taking the samples and who will this person or persons be employed by?

There are requirements in the CTUB NPDES modification for sampling. Please explain and show where and how these will be accomplished.

Floor drains :

On Sheet No. PG0211 there are three floor drains that are shown emptying into the sanitary sewer from building 300 in the SPC filter Service Floor. What is the purpose of these floor drains? What activities will happen in the area that will be drained to these drains? What surrounding areas will happen in the surrounding areas? Is this an area where people are able to walk in? If so what is the protocol to prevent contaminants from the remainder of the process floor from contaminating this area. We see the denotation of "Concrete curb around this area. Please see Architectural and structural drawings for details". However you have not made these available. Please share these with us and show us how these drains will be protected from contaminated material draining into them. Question 18 from Mr. Eckenrode asks

"Please confirm that no insulation or fiberglass products can enter the sanitary sewer system."

The response by Mr. Ferrell was:

"This letter confirms that no insulation or fiberglass products can enter the sewer system."

Please show what mechanisms are being employed and how these open floor drains are protected from fugitive contaminants in this process area.

DATE
22-12-2019 18:35:28

CLIENT
CLAYCO
THE ART & SCIENCE OF BUILDING
2109 ANNEBELT BUSINESS CENTER DRIVE
RICHMOND, VIRGINIA 23220-3107

ARCHITECT
FORUM
2109 ANNEBELT BUSINESS CENTER DRIVE
RICHMOND, VIRGINIA 23220-3107

STRUCTURAL ENGINEER

MECHANICAL ENGINEER

ELECTRICAL ENGINEER

PLUMBING ENGINEER

DERMAN ASSOCIATES

FIRE PROTECTION ENGINEER



ROCKWOOL RAN5
ROCKWOOL NORTH AMERICA
665 NORTHPORT AVENUE
RANSON, WEST VIRGINIA
25430

ROCKWOOL RAN5
ROCKWOOL NORTH AMERICA
665 NORTHPORT AVENUE
RANSON, WEST VIRGINIA
25430

DRAWING ISSUE

REV	DESCRIPTION	DATE
REV 1	90% MEFPF DESIGN	12-21-19
REV 2	90% MEFPF DESIGN	06-07-19
REV 3	30% WORKING COPY	FEB 2019
REV 4	UG PREMSET SET	03-13-19
REV 5	75% MEFPF DESIGN	04-04-19
REV 6	UG PREMSET SET	04-15-19
REV 8	90% MEFPF DESIGN	07-08-19
REV 7	IFC SET	09-16-19
REV 8	ASB 03	12-13-19

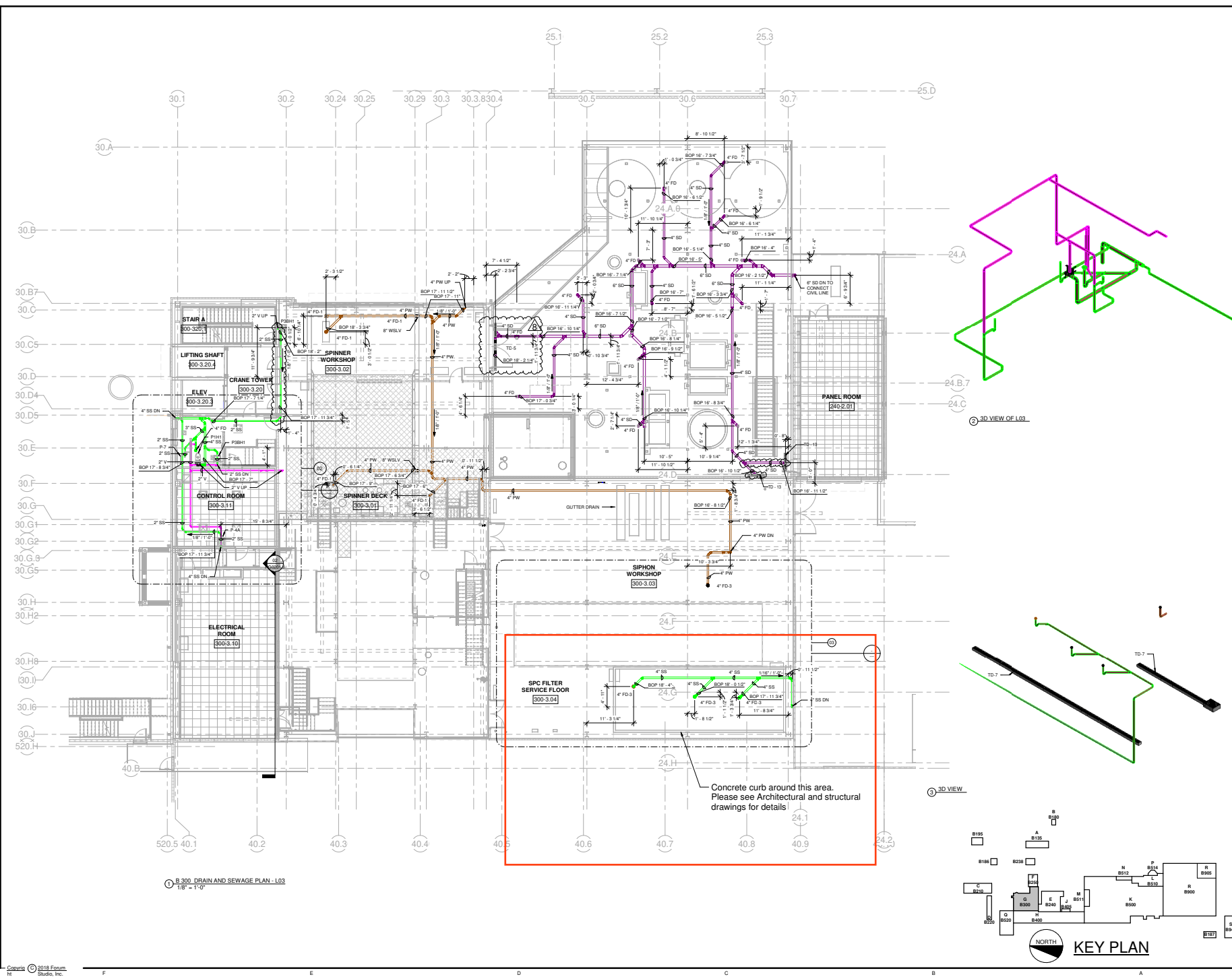
REVIEWED: GSK CHECKED: TJE
DRAWING NUMBER:
300-06-6-PG0211

BUILDING NAME:
B - 300 FURNACE BUILDING

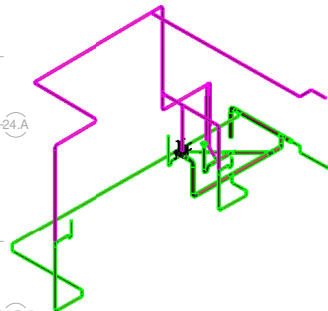
DRAWING TITLE:
B - 300 LEVEL 03 DRAIN & SANITARY PLAN

SHEET NO.
PG0211

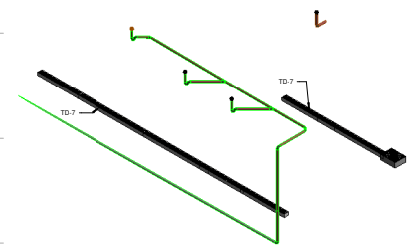
Forum | Consult



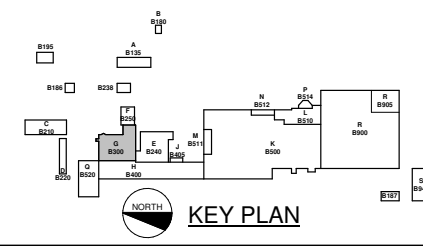
300 DRAIN AND SEWAGE PLAN - L03
1/8" = 1'-0"



3D VIEW OF L03



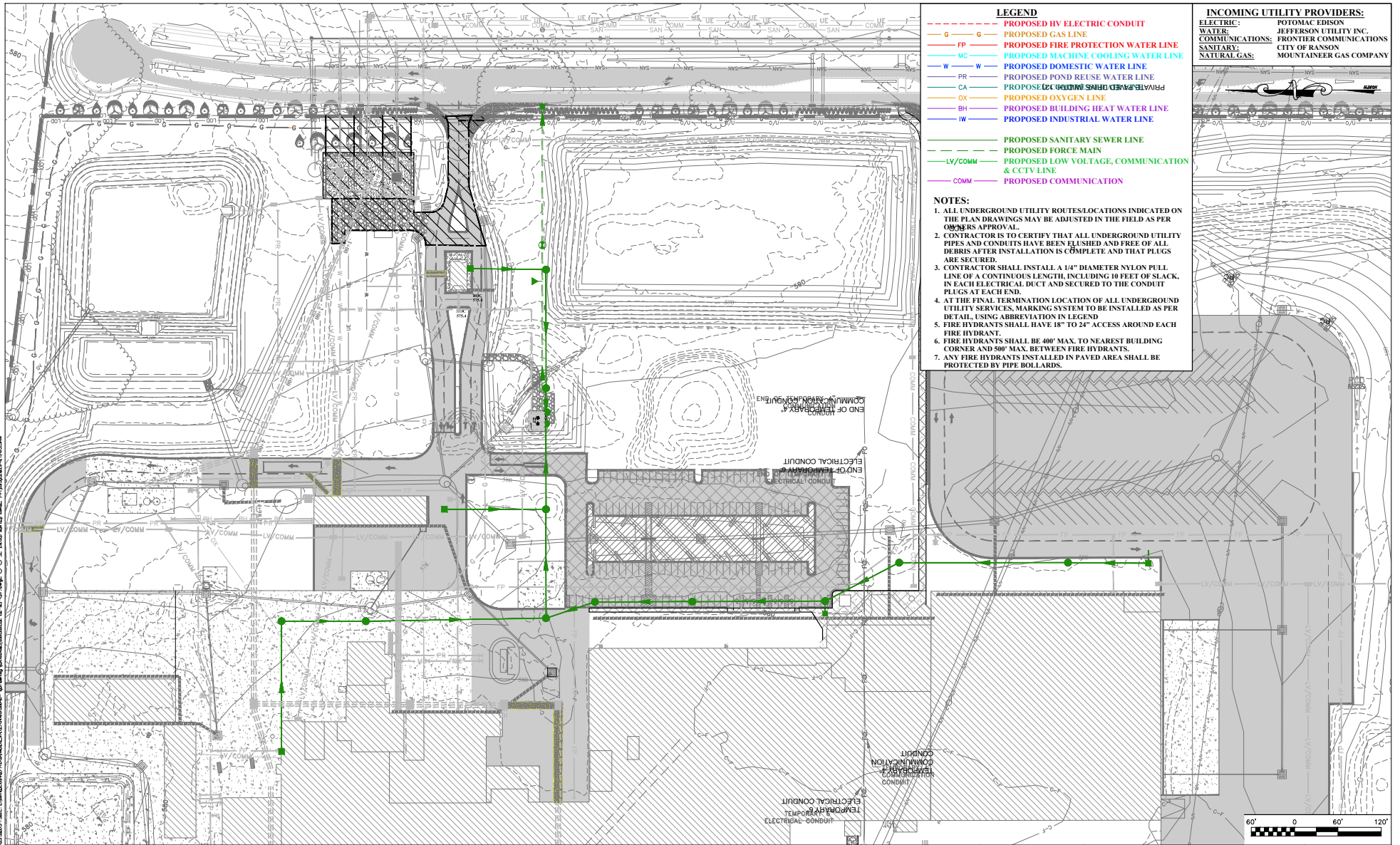
3D VIEW



KEY PLAN

Industrial Sewer:

We have reviewed the plans and we do not see the industrial sewer denoted anywhere. Specifically we do not see the industrial sewer line coming from Rockwool to connect to CTUB on 000-035. We understand that the industrial effluent is permitted to contain RO reject water and waister water from the water softener. We do not see either of these processes or lines denoted on any of the plans we have access to. Why was this not provided? Where is this industrial sewer line? Where and how and by whom will it be sampled? There is specific sampling set out in the CTUB NPDES permit for the industrial sewer line. Please explain specifically how this sampling will be accomplished.



LEGEND

---	PROPOSED HV ELECTRIC CONDUIT
G	PROPOSED GAS LINE
FP	PROPOSED FIRE PROTECTION WATER LINE
MC	PROPOSED MACHINE COOLING WATER LINE
W	PROPOSED DOMESTIC WATER LINE
PR	PROPOSED POND REUSE WATER LINE
CA	PROPOSED COLD WATER LINE
OX	PROPOSED OXYGEN LINE
BH	PROPOSED BUILDING HEAT WATER LINE
IW	PROPOSED INDUSTRIAL WATER LINE
---	PROPOSED SANITARY SEWER LINE
---	PROPOSED FORCE MAIN
LV/COMM	PROPOSED LOW VOLTAGE, COMMUNICATION & CCTV LINE
COMM	PROPOSED COMMUNICATION

INCOMING UTILITY PROVIDERS:

ELECTRIC:	POTOMAC EDISON
WATER:	JEFFERSON UTILITY INC.
COMMUNICATIONS:	FRONTIER COMMUNICATIONS
SANITARY:	CITY OF RANSON
NATURAL GAS:	MOUNTAINEER GAS COMPANY

- NOTES:**
1. ALL UNDERGROUND UTILITY ROUTES/LOCATIONS INDICATED ON THE PLAN DRAWINGS MAY BE ADJUSTED IN THE FIELD AS PER OWNER'S APPROVAL.
 2. CONTRACTOR IS TO CERTIFY THAT ALL UNDERGROUND UTILITY PIPES AND CONDUITS HAVE BEEN FLUSHED AND FREE OF ALL DEBRIS AFTER INSTALLATION IS COMPLETE AND THAT PLUGS ARE SECURED.
 3. CONTRACTOR SHALL INSTALL A 1/4" DIAMETER NYLON PULL LINE OF A CONTINUOUS LENGTH, INCLUDING 10 FEET OF SLACK, IN EACH ELECTRICAL DUCT AND SECURED TO THE CONDUIT PLUGS AT EACH END.
 4. AT THE FINAL TERMINATION LOCATION OF ALL UNDERGROUND UTILITY SERVICES, MARKING SYSTEM TO BE INSTALLED AS PER DETAIL, USING ABBREVIATION IN LEGEND
 5. FIRE HYDRANTS SHALL HAVE 18" TO 24" ACCESS AROUND EACH FIRE HYDRANT.
 6. FIRE HYDRANTS SHALL BE 400' MAX. TO NEAREST BUILDING CORNER AND 500' MAX. BETWEEN FIRE HYDRANTS.
 7. ANY FIRE HYDRANTS INSTALLED IN PAVED AREA SHALL BE PROTECTED BY PIPE BOLLARDS.



LAYOUT FILE: SANITARY SEWER.dwg
 THE INFORMATION CONTAINED HEREIN IS THE PROPERTY OF THE THRASHER GROUP, INC. AND IS NOT TO BE REPRODUCED OR TRANSMITTED IN ANY FORM OR BY ANY MEANS, ELECTRONIC OR MECHANICAL, INCLUDING PHOTOCOPYING, RECORDING, OR BY ANY INFORMATION STORAGE AND RETRIEVAL SYSTEM. WITHOUT THE WRITTEN PERMISSION OF THE THRASHER GROUP, INC. COPYRIGHT © 2019 THE THRASHER GROUP, INC.

NO.	BY	DATE	DESCRIPTION



SCALE:	
DRAWN: EKHB	DATE:
CHECKED:	DATE:
APPROVED:	DATE:
SURVEY DATE: 9/17/2019	
SURVEY BY:	
FIELD BOOK NO.:	

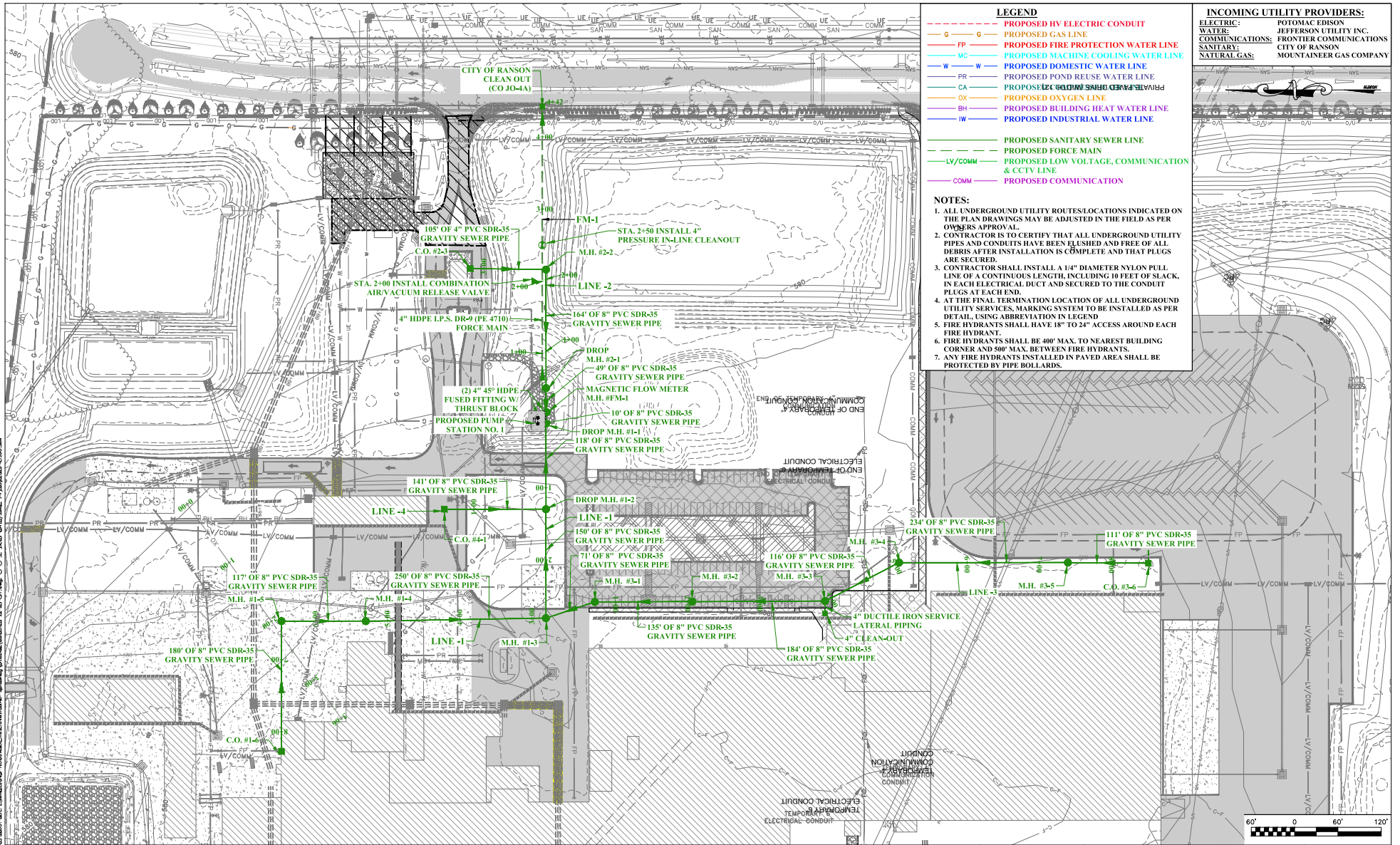
THRASHER

THE THRASHER GROUP, INC.
 CIVIL • ENVIRONMENTAL • CONSULTING • FIELD SERVICES
 600 WHITE OAKS BOULEVARD, BRIDGEPORT, WV 26330
 PHONE (304) 624-4108 • FAX (304) 624-7831

PHASE No.	
CONTRACT No.	
PROJECT No.	101-020-10013

ROXUL USA INC.
 ROCKWOOL WASTEWATER TREATMENT PLANT
 CONCEPTUAL LAYOUT
 JEFFERSON COUNTY, WEST VIRGINIA
 SANITARY SEWER LAYOUT

SHEET No.
000-035

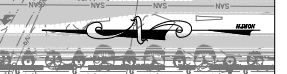


LEGEND

- PROPOSED HV ELECTRIC CONDUIT
- G --- PROPOSED GAS LINE
- FP --- PROPOSED FIRE PROTECTION WATER LINE
- MC --- PROPOSED MACHINE COOLING WATER LINE
- W --- PROPOSED DOMESTIC WATER LINE
- PR --- PROPOSED POND REUSE WATER LINE
- CA --- PROPOSED CATHODIC PROTECTION WATER LINE
- OX --- PROPOSED OXYGEN LINE
- BH --- PROPOSED BUILDING HEAT WATER LINE
- IW --- PROPOSED INDUSTRIAL WATER LINE
- --- PROPOSED SANITARY SEWER LINE
- --- PROPOSED FORCE MAIN
- LV/COMM --- PROPOSED LOW VOLTAGE, COMMUNICATION & CCTV LINE
- COMM --- PROPOSED COMMUNICATION

- NOTES:**
1. ALL UNDERGROUND UTILITY ROUTES/LOCATIONS INDICATED ON THE PLAN DRAWINGS MAY BE ADJUSTED IN THE FIELD AS PER OWNERS APPROVAL.
 2. CONTRACTOR IS TO CERTIFY THAT ALL UNDERGROUND UTILITY PIPES AND CONDUITS HAVE BEEN FLUSHED AND FREE OF ALL DEBRIS AFTER INSTALLATION IS COMPLETE AND THAT PLUGS ARE SECURED.
 3. CONTRACTOR SHALL INSTALL A 1/4" DIAMETER NYLON PULL LINE OF A CONTINUOUS LENGTH, INCLUDING 10 FEET OF SLACK, IN EACH ELECTRICAL DUCT AND SECURED TO THE CONDUIT PLUGS AT EACH END.
 4. AT THE FINAL TERMINATION LOCATION OF ALL UNDERGROUND UTILITY SERVICES, MARKING SYSTEM TO BE INSTALLED AS PER DETAIL, USING ABBREVIATION IN LEGEND.
 5. FIRE HYDRANTS SHALL HAVE 18" TO 24" ACCESS AROUND EACH FIRE HYDRANT.
 6. FIRE HYDRANTS SHALL BE 400' MAX. TO NEAREST BUILDING CORNER AND 500' MAX. BETWEEN FIRE HYDRANTS.
 7. ANY FIRE HYDRANTS INSTALLED IN PAVED AREA SHALL BE PROTECTED BY PIPE BOLLARDS.

INCOMING UTILITY PROVIDERS:
 ELECTRIC: POTOMAC EDISON
 WATER: JEFFERSON UTILITY INC.
 COMMUNICATIONS: FRONTIER COMMUNICATIONS
 SANITARY: CITY OF RANSON
 NATURAL GAS: MOUNTAINEER GAS COMPANY



LAYOUT FILE: SANITARY SEWER
 C:\PROJECTS\2018\20180313\20180313-01\20180313-01.dwg
 DATE: 03/13/19
 TIME: 11:27:49 AM
 USER: JEFFREY.WATSON
 PLOT FILE: 20180313-01.dwg
 PLOT DATE: 03/13/19
 PLOT TIME: 11:27:49 AM
 PLOT USER: JEFFREY.WATSON

NO.	BY	DATE	DESCRIPTION
4	PL	10/30/17	REMOVED ADDED FIRE PROTECTION LINES
5	PL	01/05/18	Revised utilities
6	PL	05/02/18	REVISED UTILITIES
9	PL	10/03/18	REVISIONS
11	WSH	03/13/19	Relocated magnetic flow meter, Changed potable to domestic water in legend.



SCALE:	DATE:
DRAWN: WSH	DATE:
CHECKED:	DATE:
APPROVED:	DATE:
SURVEY DATE: 4/72/17	
SURVEY BY:	
FIELD BOOK NO.:	

THRASHER
 THE THRASHER GROUP INC.
 CIVIL & ENVIRONMENTAL CONSULTING & FIELD SERVICES
 600 WHITE OAKS BOULEVARD, BRIDGEPORT, WV 26330
 PHONE (304) 624-4168 • FAX (304) 624-7831

PHASE No.	
CONTRACT No.	
PROJECT No.	101-030-3203

ROYUL USA INC.
 CITY OF RANSON SITE PLAN APPLICATION
 RAN 5 PROJECT
 JEFFERSON COUNTY, WEST VIRGINIA
 SANITARY SEWER LAYOUT

SHEET No.
000-035